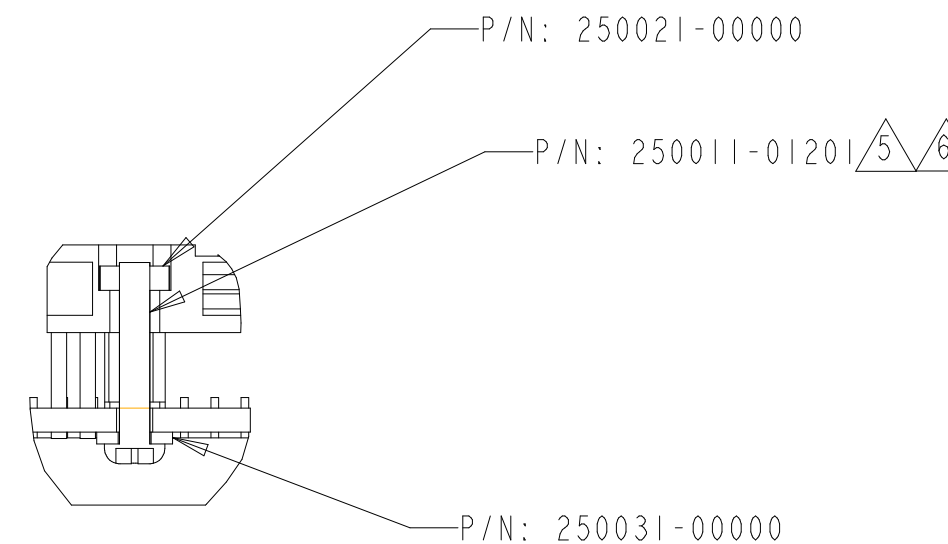
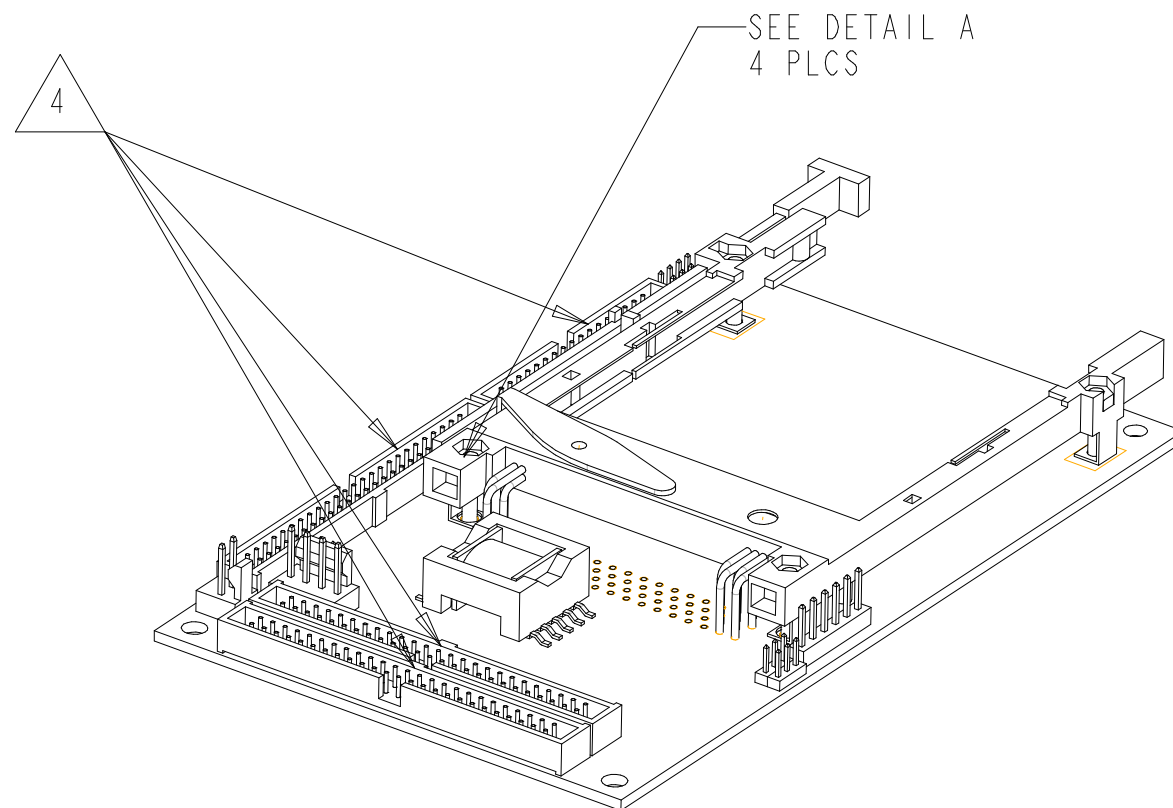


REV	DESCRIPTION	DATE	INIT
A	INITIAL RELEASE		
B	ECN 111-100098		



DETAIL A

NOTES:

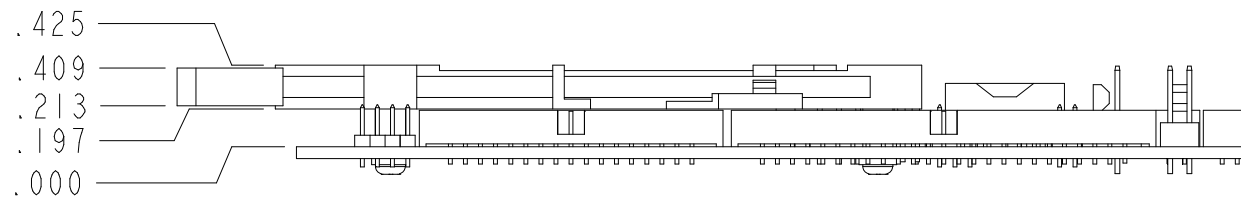
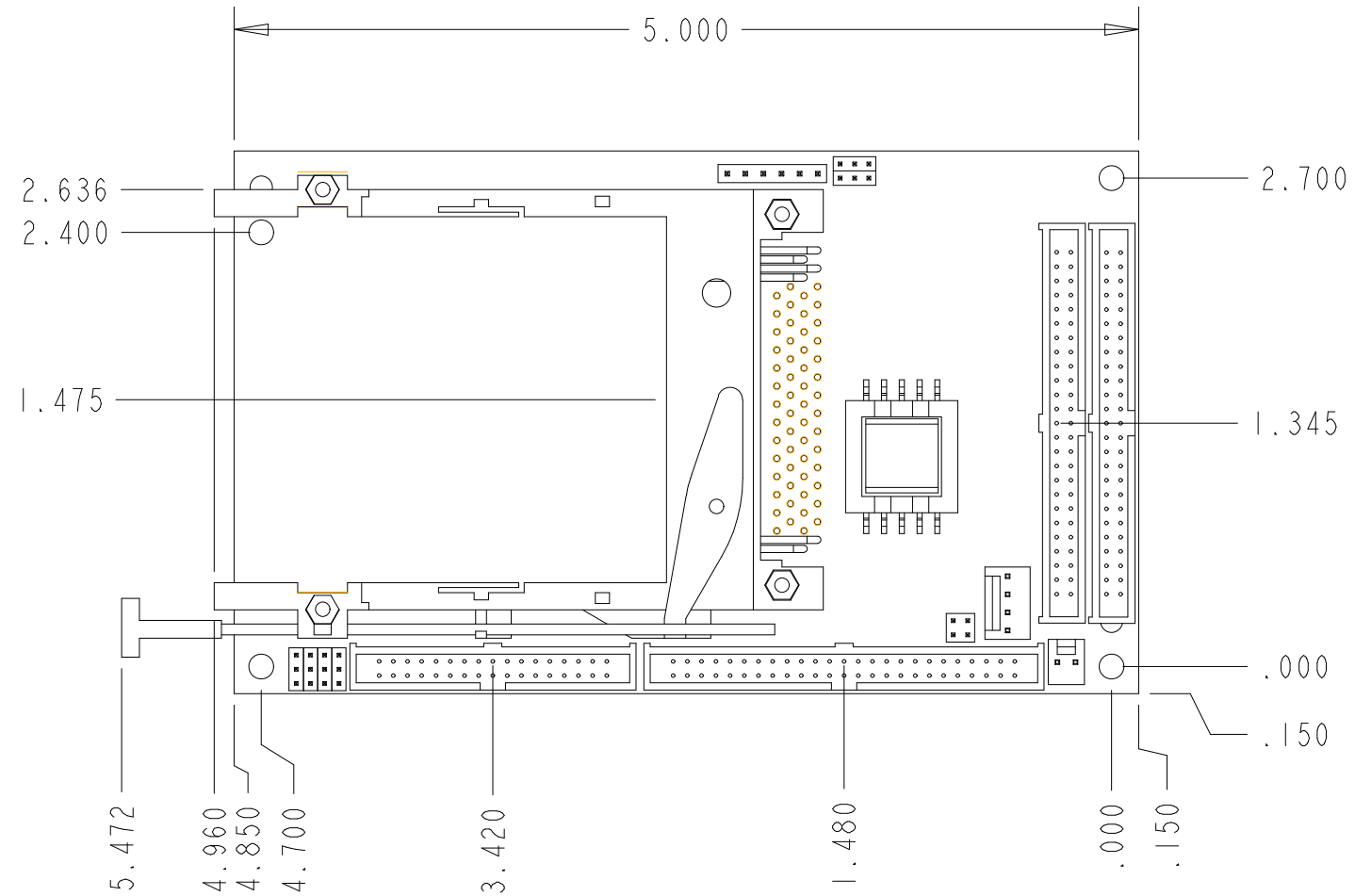
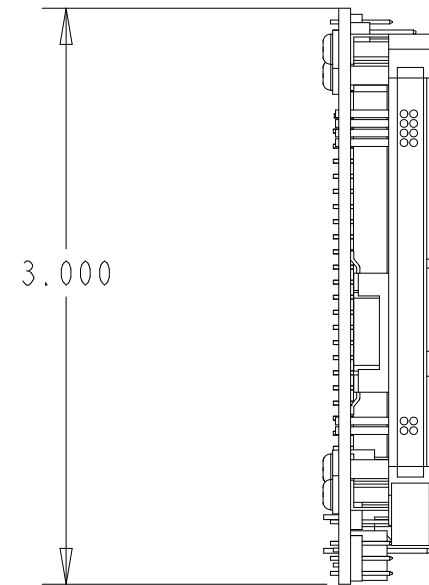
1. DO NOT SCALE
2. ALWAYS REFER TO MANUFACTURERS DATASHEET FOR COMPONENT DIMENSIONS
3. DIMENSIONS ARE IN INCHES

△4 CONNECTORS J1, J3, J9, AND J10 MAY BE PLACED ON EITHER SIDE OF BOARD DEPENDING ON CUSTOMER REQUIREMENTS

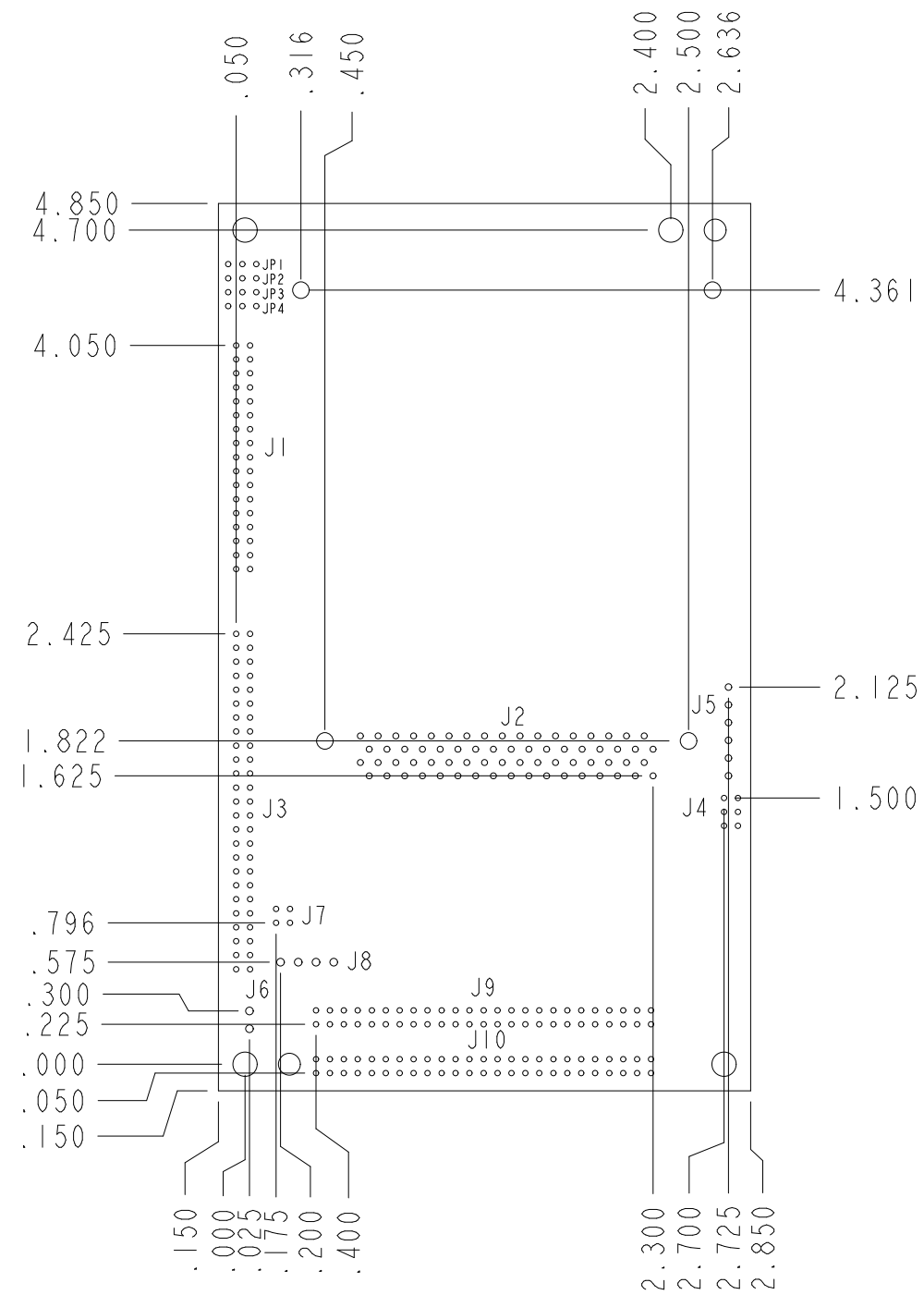
△5 TORQUE SCREWS 1.0 TO 1.5 MAX in-lbs

△6 APPLY LOCKTIGHT 222 OR EQUIVALENT THREADLOCKER

APPROVALS		APPLIED DATA SYSTEMS, Inc. 9140-A GUILFORD ROAD, COLUMBIA, MARYLAND 21061			
DRAWN BY:	DATE:	TITLE MECHANICAL DETAIL BITSY I/O BOARD			
CHECKED BY:					
APPROVED BY:		SIZE	JOB NO.	DRAWING NO.	REV
APPROVED BY:		B		630111-1000	B
RELEASED BY:		SCALE 1/1	COPYRIGHT 2000, 2001 APPLIED DATA SYSTEMS, INC. ALL RIGHTS RESERVED		SHEET 1 OF 3



APPLIED DATA SYSTEMS, Inc. 9140-A GUILFORD ROAD, COLUMBIA, MARYLAND 21061			
SIZE	JOB NO.	DRAWING NO.	REV
B		630111-1000	B
SCALE 1/1	<small>COPYRIGHT 2000, 2001 APPLIED DATA SYSTEMS, INC. ALL RIGHTS RESERVED</small>		SHEET 3 OF 3



HOLE LOCATIONS

PARTS LIST			
REF	ADS P/N	MANU.	MANUFACTURER P/N
PWB1	170111-1000B	ADS	N/A
J6	210060-01025	MOLEX	22-23-2021
J8	210060-01042	MOLEX	22-23-2041
J5	210060-01060	SAMTEC	MTSWI36076LS200LL
J7	210060-02027	SAMTEC	TMM-102-03-T-D
J4	210060-02038	SAMTEC	TMM-103-03-T-D
J1	210060-0217A	SAMTEC	STMM-117-02-T-D
J3, J9, J10	210060-02258	SAMTEC	STMM-125-02-T-D
J2	210070-00097	FCI/BERG	95620-050CA
T2	T00001-00006	PHILIPS	EFD15D

APPLIED DATA SYSTEMS, Inc.
9140-A GUILFORD ROAD, COLUMBIA, MARYLAND 21061

SIZE	JOB NO.	DRAWING NO.	REV
B		630111-1000	B
SCALE 1/1		SHEET 2 OF 3	

COPYRIGHT 2000, 2001
APPLIED DATA SYSTEMS, INC.
ALL RIGHTS RESERVED