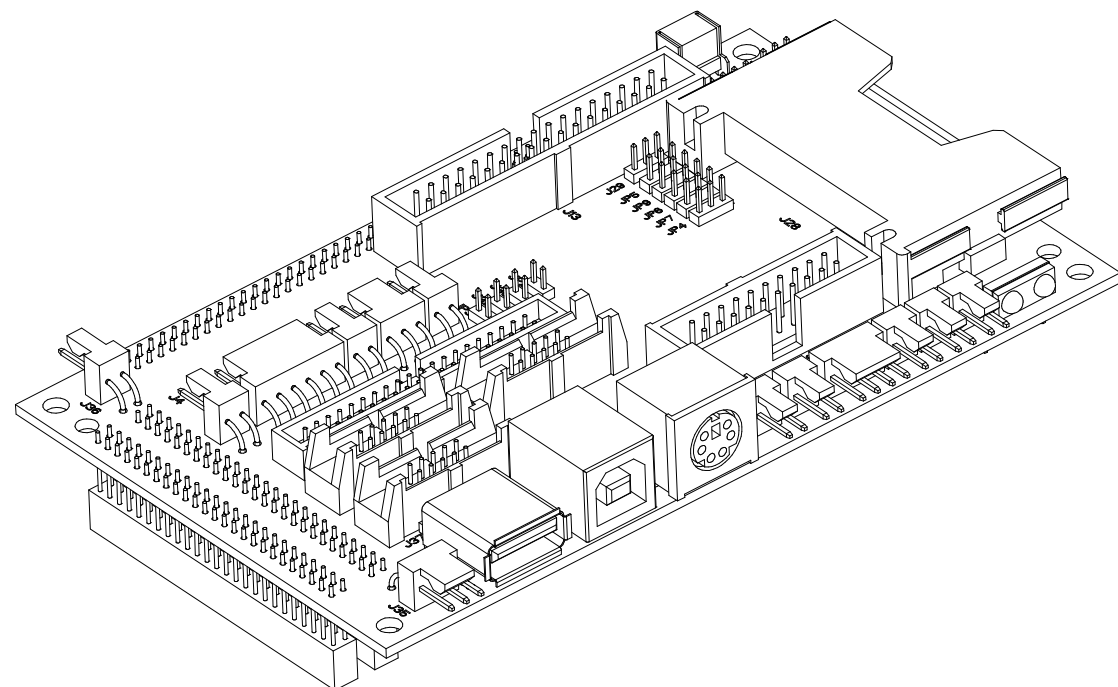
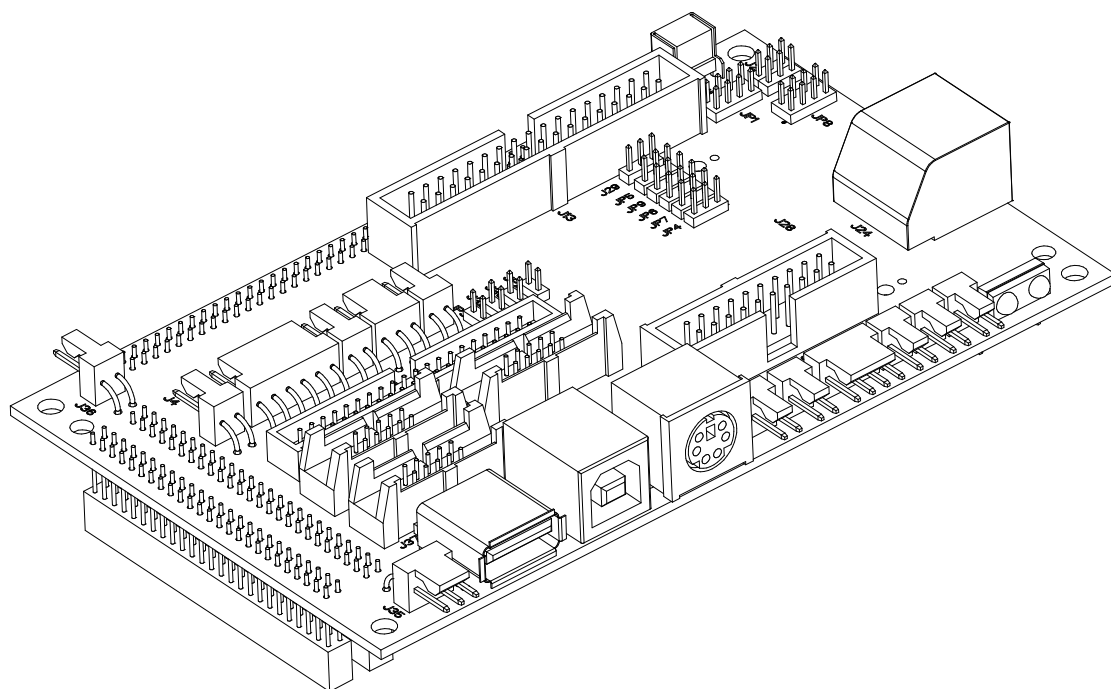


REV	DESCRIPTION	DATE	INIT
1	Prototype Release	2/6/01	



-1000 (COMPACT FLASH VERSION)



-1001 (RJ45 VERSION)

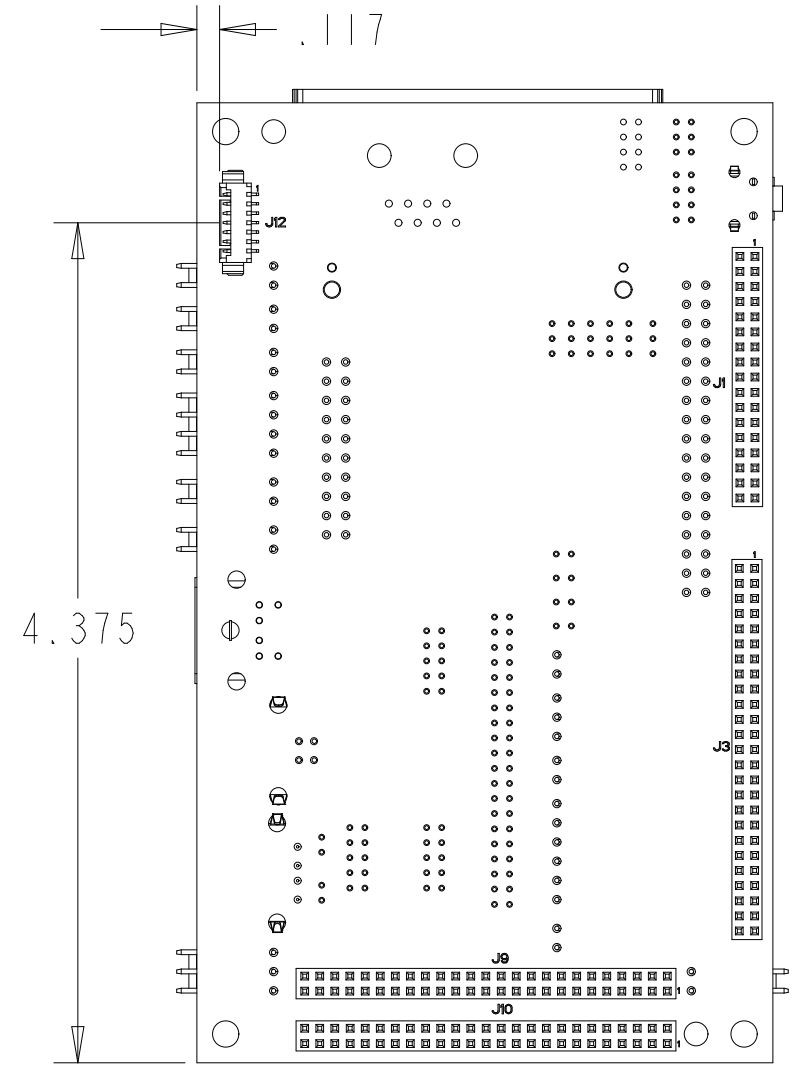
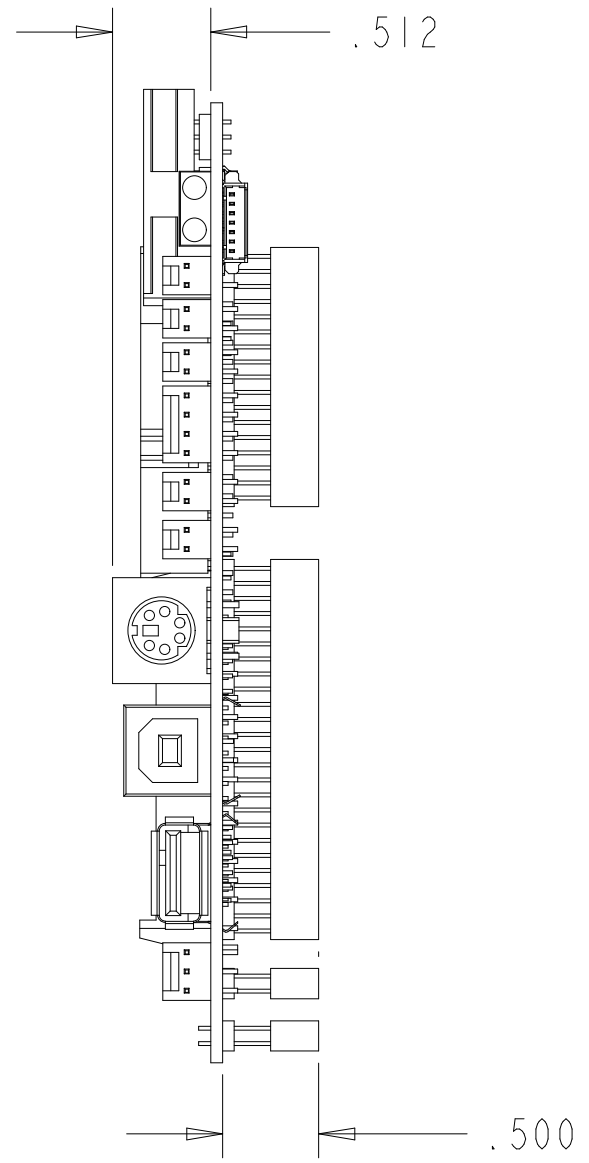
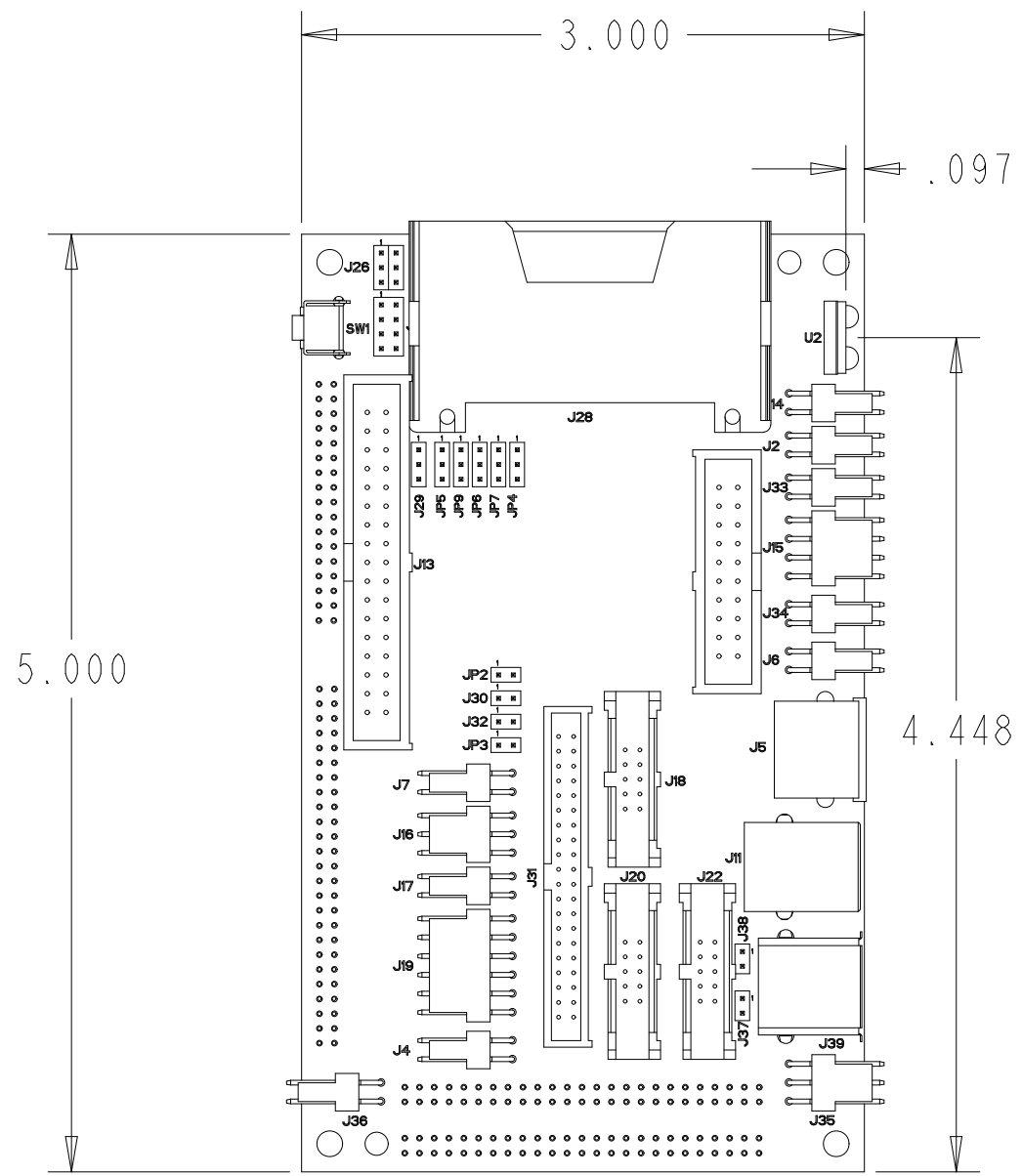
NOTES:

- MATERIAL 0.062" THICK FR-4
- CONNECTORS J1, J3, J9, J10, AND J12 MOUNTED ON BOTTOM SIDE

PARTS LIST (FOR REFERENCE ONLY)

REF DESIGNATOR	ADS P/N	MANUFACTURER	P/N
PWB1	170111-80001	ADS	N/A
J1	210050-02178	SAMTEC	ESQT-117-02-F-D-500
J2, J4, J6, J7, J14, J17, J33, J34, J36	210060-01023	MOLEX	22-05-3021
J3, J9, J10	210050-02258	SAMTEC	ESQT-125-02-F-D-500
J5	210070-00074	SINGATRON ENTPRS	MDJ-004-6P
J11	210070-00061	AMP	787780-1
J12	210061-01071	MOLEX	53261-0790
J13	210060-02174	SOLID	LPH-34S
J15	210060-01043	MOLEX	22-05-3041
J16, J35	210060-01033	MOLEX	22-05-3031
J18, J20, J22	210060-02057	SAMTEC	EHT-105-01-S-D
J19	210060-01063	MOLEX	22-05-3061
J24	210070-00044	AMP	555167-1
J26	210060-02038	SAMTEC	TMM-103-03-T-D
J27	210060-02104	SAMTEC	TST-110-01-G-D
J28	210071-00016	FCI/BERG	62453-022
J29	210060-01038	SAMTEC	TMM-150-03-T-S
J30, J32, J37, J38	210060-01028	SAMTEC	TMM-150-03-T-S
J31	210060-02208	SAMTEC	STMM-120-02-T-D
J39	210070-00098	AMP	787616-1
JPI, JP8	210060-02047	SAMTEC	TMM-104-03-T-D
SW1	510010-00009	OMRON	B3F-3120
U2	U00471-00031	VISHAY-TEMIC	TFDU6101E

APPROVALS		APPLIED DATA SYSTEMS, Inc. 9140-A GUILFORD ROAD, COLUMBIA, MARYLAND 21061			
DRAWN BY: M. Blattau	DATE:	TITLE BITSY CONNECTOR BOARD			
CHECKED BY: P. Dombrowski					
APPROVED BY: A. Philippe		SIZE B	JOB NO.	DRAWING NO. 630111-8000	REV 1
APPROVED BY: R. Davis		SCALE 1/1		SHEET 1 OF 3	
RELEASED BY: H. Wilson		COPYRIGHT 2000, 2001 APPLIED DATA SYSTEMS, INC. ALL RIGHTS RESERVED			



APPLIED DATA SYSTEMS, Inc. 9140-A GUILFORD ROAD, COLUMBIA, MARYLAND 21061			
SIZE B	JOB NO.	DRAWING NO. 630111-8000	REV 1
SCALE 1/1		COPYRIGHT 2000, 2001 APPLIED DATA SYSTEMS, INC. ALL RIGHTS RESERVED	
			SHEET 2 OF 3

