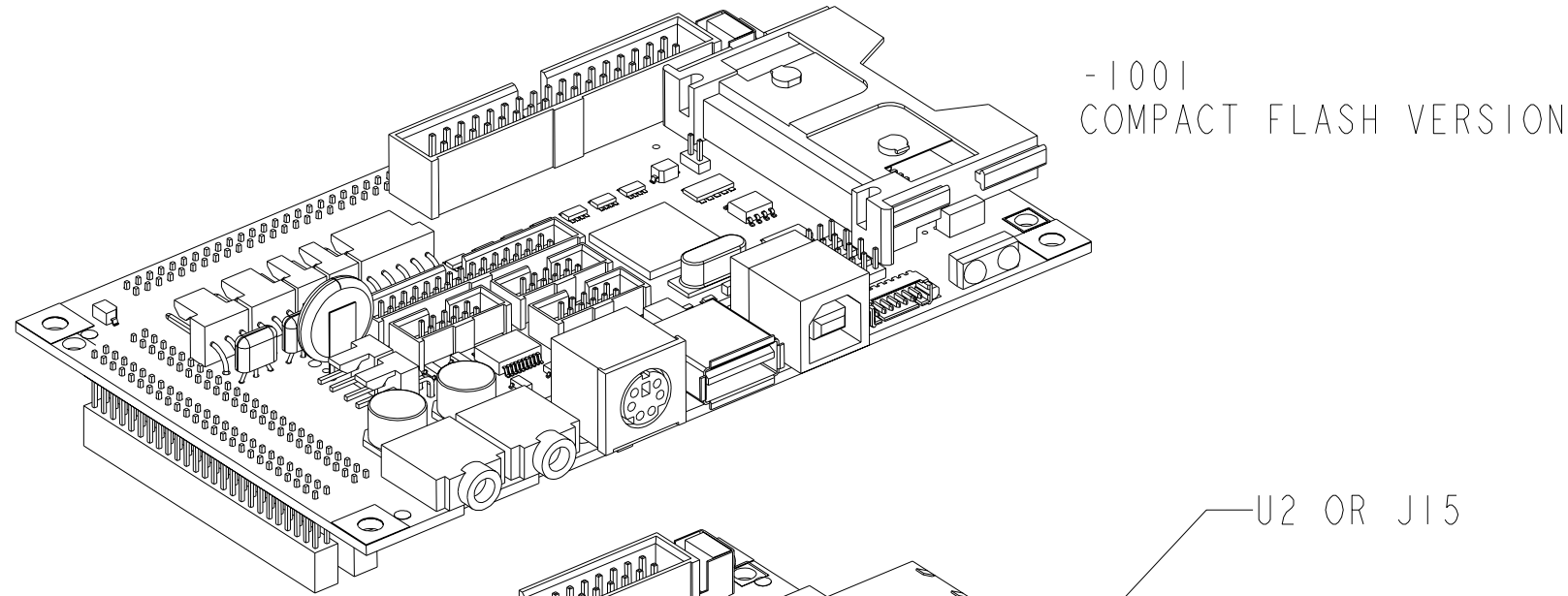


NOTES: (UNLESS OTHERWISE SPECIFIED):

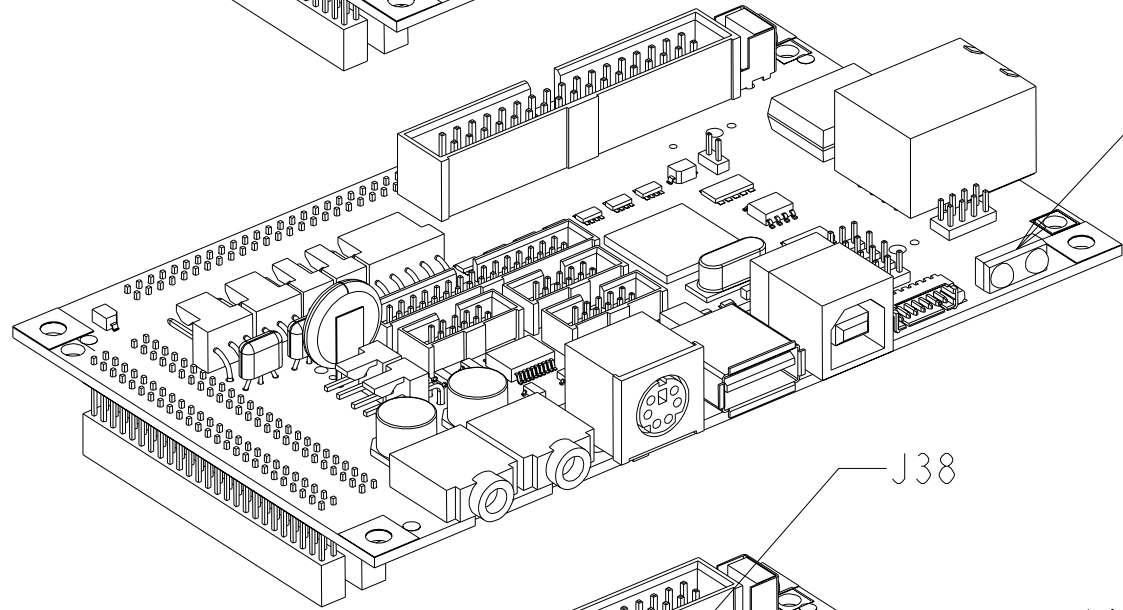
1. MODEL CREATED USING PRO/E 2001
2. SEE SHEET 3 FOR PWB RAIL DETAILS

REVISION				
ZONE	REV	DESCRIPTION	DATE	APPROVED
	A	PRODUCTION RELEASE	9/19/02	



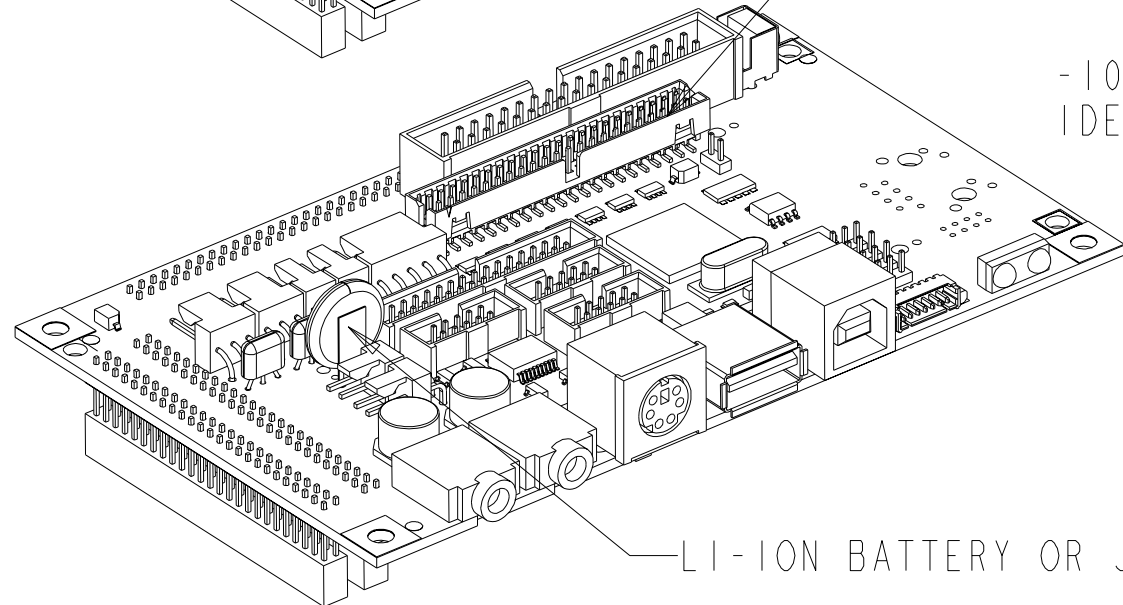
-1001
COMPACT FLASH VERSION

U2 OR J15



-1002
RJ-45 VERSION

J38



-1003
IDE VERSION

LI-ION BATTERY OR J4

PARTS LIST (FOR REFERENCE ONLY)

REF. DESIGNATOR	ADS P/N	MANUFACTURER	P/N
PWB1	170111-8000	ADS	N/A
J1	210050-02178	SAMTEC	ESQT-117-02-F-D-500
J12	210061-01071	MOLEX	53261-0790
J3 J9 J10	210050-02258	SAMTEC	ESQT-125-02-F-D-500
J38	210060-04410	MOLEX	87332-4421
J28	210071-00016	FCI	62453-022
J4 J6 J14 J34 J36	210060-01023	MOLEX	22-05-3021
J7 J16	210060-01033	MOLEX	22-05-3031
J43	210060-01053	MOLEX	22-05-3051
J18 J20 J22	210060-02058	SAMTEC	STMM-105-01-T-D
J31	210060-02158	SAMTEC	STMM-115-02-T-D
J13	210060-02174	SAMTEC	TST-117-01-G-D
J24	210070-00161	AMP	569564-1
J11	210070-00061	AMP	787780-1
J5	210070-00074	SINGATRON	MDJ-004-6P
J44 J45	210070-00089	SWITCHCRAFT	35RAPC4BHN2
J37	210070-00098	AMP	787616-1
J15	210061-01080	MOLEX	53261-0890
SW1	510010-00009	OMRON	B3F-3120

UNLESS OTHERWISE SPECIFIED
DIMENSIONS ARE IN INCHES
TOLERANCES ARE:
DECIMALS
.XX ± .01
.XXX ± .005
✓ RMS ALL MACHINED SURFACES
BREAK ALL SHARP EDGES
AND CORNERS, REMOVE BURRS.

THIS DOCUMENT CONTAINS INFORMATION
PROPRIETARY TO ADS AND
SHALL NOT BE USED FOR ENGINEERING
DESIGN, PROCUREMENT OR MANUFACTURER
IN WHOLE OR IN PART WITHOUT THE
CONSENT OF ADS

DRAWN	DATE
MECHANICAL ENGINEER M Blattau	9/16/02

APPLIED DATA SYSTEMS

9140 Guilford Rd. Columbia, Maryland 21046 USA

TITLE
**BITSY CONNECTOR
MECHANICAL DETAIL**

MATERIAL

FINISH

ADS

SIZE	DWG. NO.	REV
B	630111-8000	A
SCALE: 1.000	DO NOT SCALE DRAWING	SHEET 1 OF 3

D
C
B
A

4

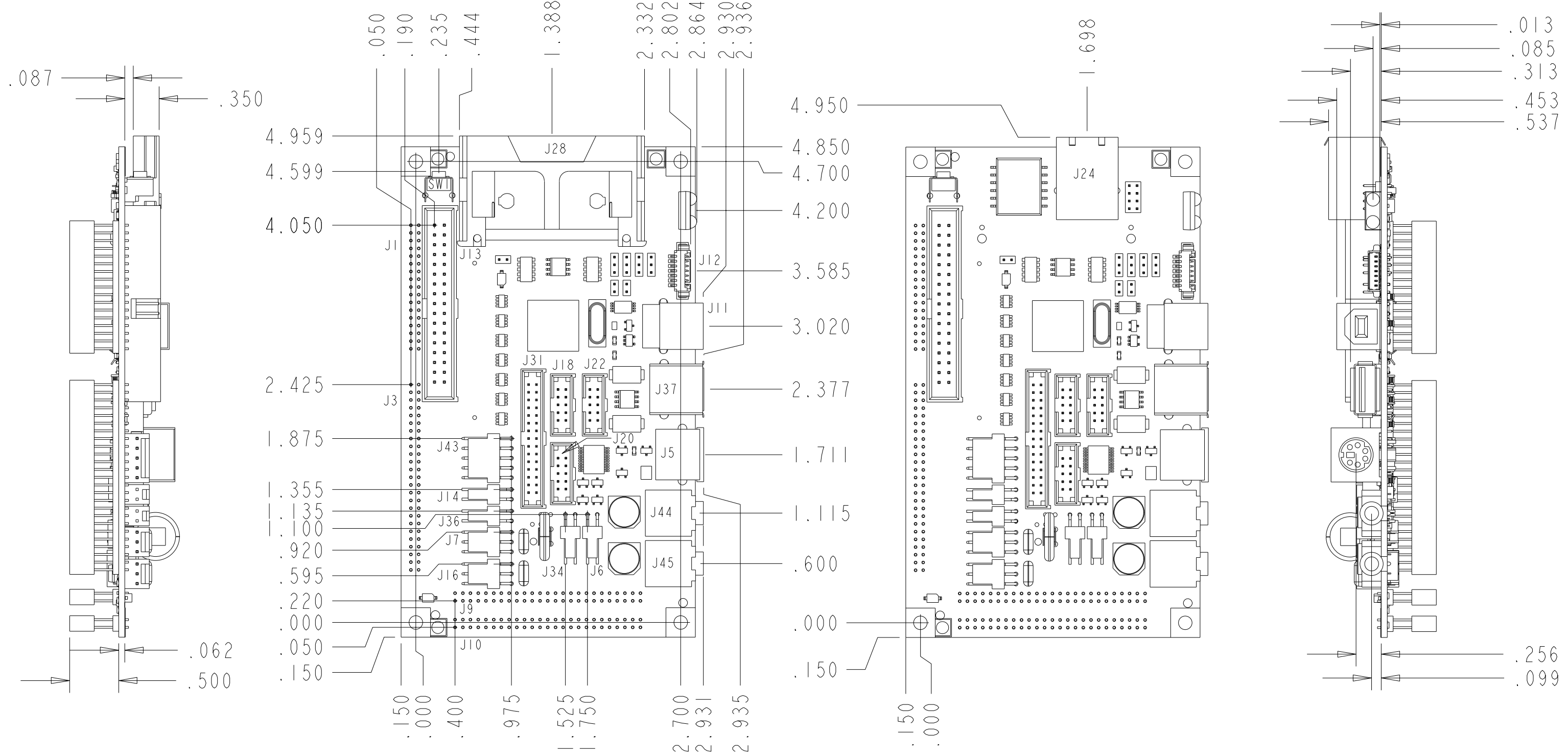
3

2

1

-1000

-1001



D
C
B
A

4

3

2

1

D
C
B
A

D
C
B
A

4

3

2

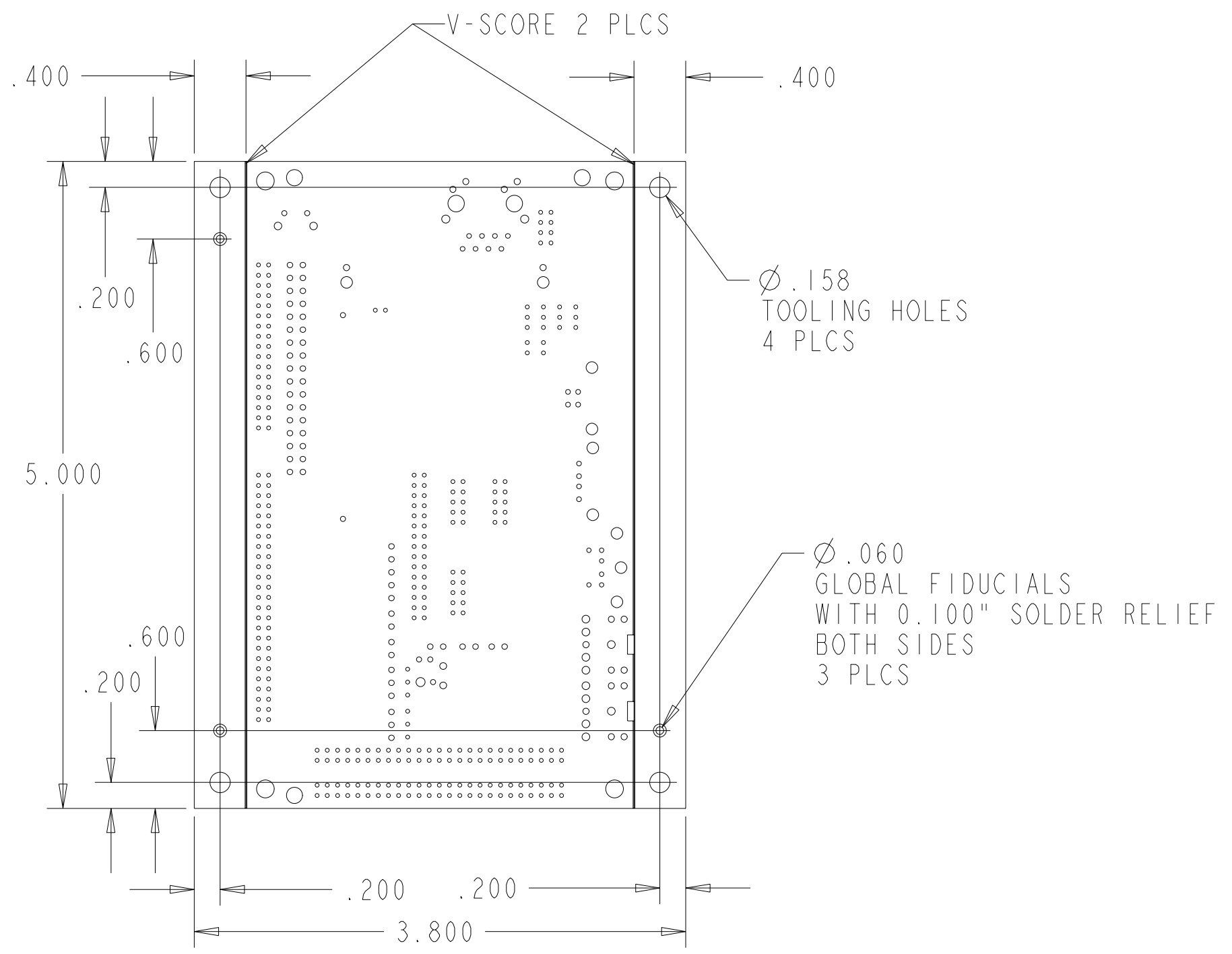
1

4

3

2

1



SIZE B	DWG. NO. 630111-8000	REV A
SCALE: 1.000	DO NOT SCALE DRAWING	SHEET 3 OF 3